

## ScanDevil Professional™ Program Loader Instructions

The Rabbit Field Utility allows loading of programs to the ScanDevil Professional Handheld data collector.

This should not be confused with configuring the ScanDevil for inventory data collection. Configuring the ScanDevil requires a different cable connected to a different port.

First, connect the uploader cable (as seen below) to the serial (RS-232) port of your PC.

{insert cable photo here}

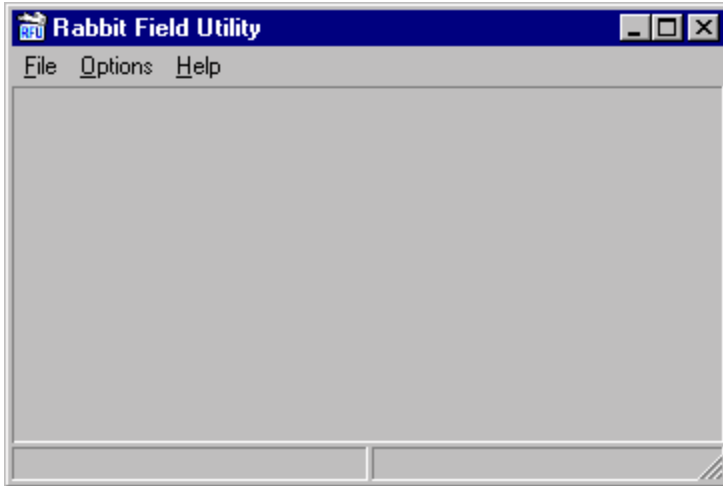
Next, connect the opposite end of the cable to the uploader port of the ScanDevil Professional. The cable may only be inserted one way –see photo below.

{insert connection photo here}

On your PC, double-click the RFU icon on your computers' desktop. You may also open RFU from the ISB program group or from the "External Applications Menu" in ISB.



You will see the RFU Opening screen appear.



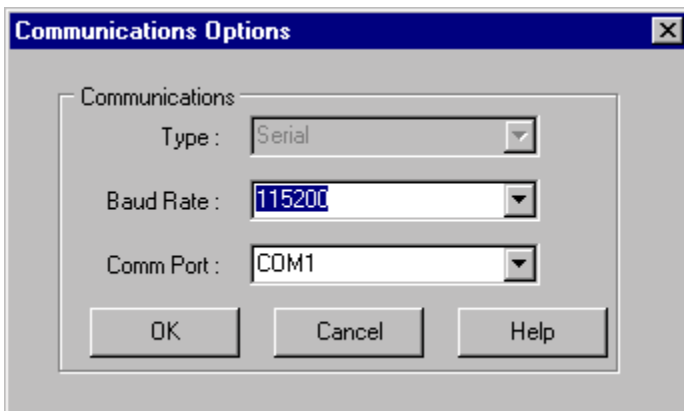
You will need to set the communications settings to allow your PC to upload the program to your ScanDevil Professional. Click OPTIONS - COMMUNICATIONS



Every PC will use different port settings. Leave the Baud Rate at the default of 115200. To determine to correct "Comm Port" settings, you may either experiment by trial and error or follow these guides:

- Click the START button on your PC's desktop.
- Click SETTINGS
- Click CONTROL PANEL
- Double-Click SYSTEM
- Click the DEVICE MANAGER Tab
- Double-Click PORTS (COM & LPT)

You will see your communications port {example: Communications Port (COM 1)}

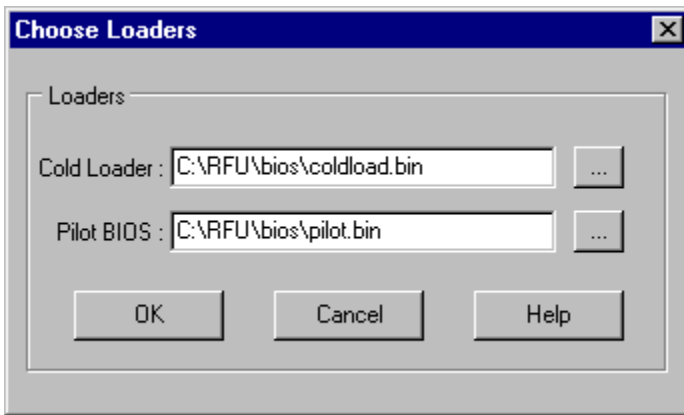


Click OK when complete.

Confirm that the “Cold Loader” and “Pilot BIOS” are correct by selecting COMMUNICATIONS - BOOT STRAP LOADERS




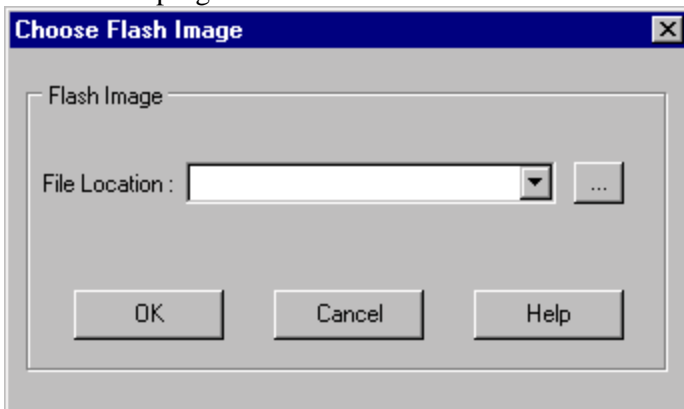
Click OK.



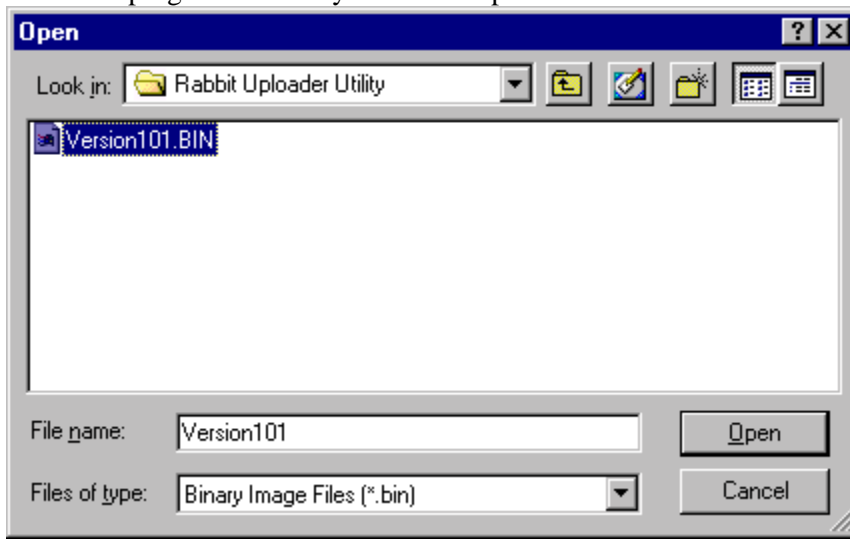
Now will be time to load the program into the ScanDevil Professional. Click FILE – LOAD FLASH IMAGE



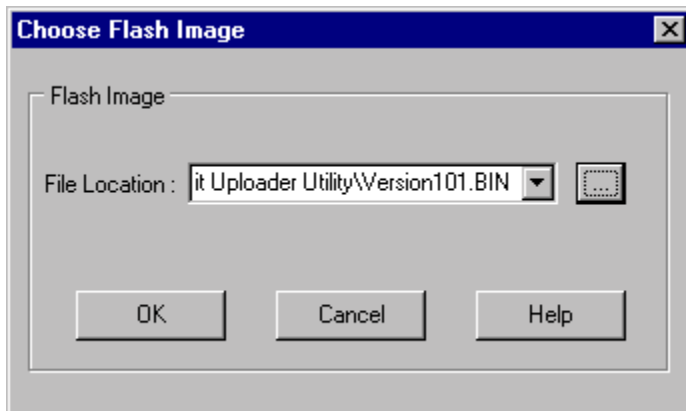
Select the program to load via the drop down list or click the  button to search your hard drive for the program file.



Select the program file that you wish to upload. Click OPEN.



Click OK when ready. The program, file will be loaded into the ScanDevil Professional. You will see an indicator of the progress of the upload.



© Copyright 2001 Inventory Science Systems Corp.  
All rights reserved Worldwide

The Rabbit Field Utility is the property of Z-World Inc. Davis CA